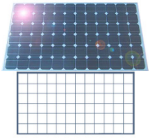


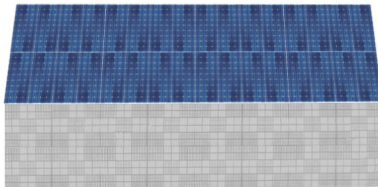
proyecto / project

SolarCircuit RAYsponse (working title)



de / by	> calc
tiempo / time	> since 2004 - ...
campo / field	> art, public space inter-action, -vention
dirección / address	> face of an institutional building
	> www.solarcircuitraysponse.net (working title url)

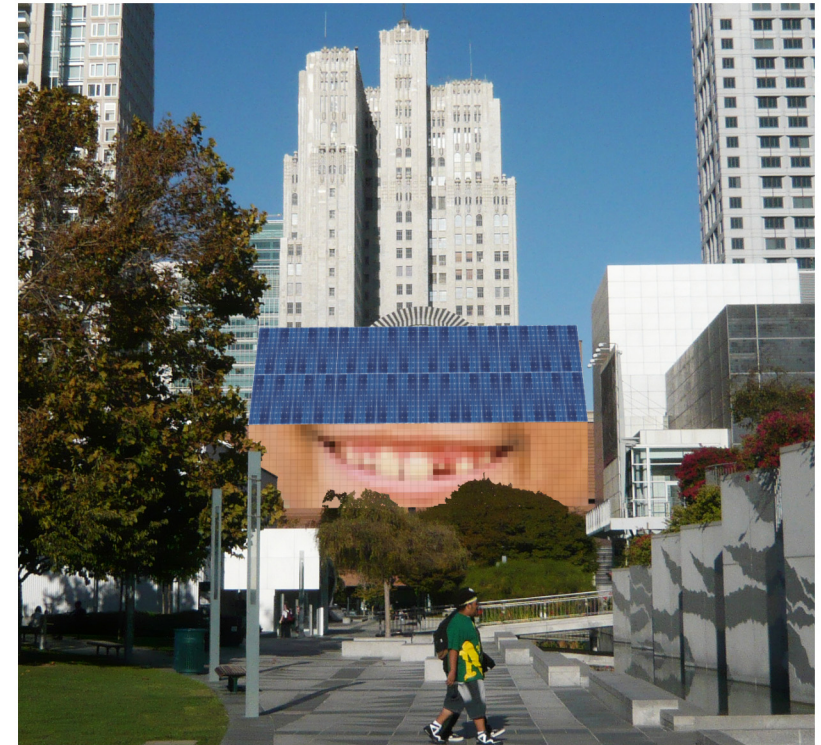
vista / glance



the "solar- and image-panel - house".
its dimensions are calculated according to
the facades proportions and climate conditions.



simulation on the SFMOMA facade, view from northwest



view from southwest

resumen / brief description > *SolarCircuit RAYsponse* is a project with the aim to let the facade of an institution (= a meaning charged facade) express itself in the public environment. its two architectural/technical elements consist of a solar panel and a proportional related image panel ("screen"). the dimension of the construction intends to change the common appearance of the building and how this is perceived. *SolarCircuit RAYsponse* is technically designed on a self-sustaining principle: what the solarpanel receives as light/energy, the screen can give back as light/image. the screen is made of "big pixel elements", each represented by an illuminating field of approximately 18 cm x 18 cm (8 inches x 8 inches), which means that sent information/images change its meaning from "concrete-far" to "abstract-near". it is important to note that the display elements are not expensive sophisticated technologies, but self made, recycled or/and invented composites of existing every day technologies (like *realities:united* realized for instance the media facade of the Kunsthaus Graz with ordinary kitchen-lights! the main reason why this 900m² "screen" is still working perfectly we suppose!). the information displayed on the *SolarCircuit RAYsponse* screen is data streamed from mobile phones and its own website. an editor working as a "human filter" guarantees that the shown images or texts following a defined ethic guideline in order to prevent the broadcasting of any insulting, racist, sexual or other not tolerable content. all conceptual and technical questions, regarding the realization of *SolarCircuit RAYsponse* project, calc wants to discuss and develop openly in workshops with any interested person or institution such as local students, technicians, artists or companies. as a basis, calc wants to contribute feasible and unprocessed ideas for answering these questions.

en colaboración con / in collaboration with >