



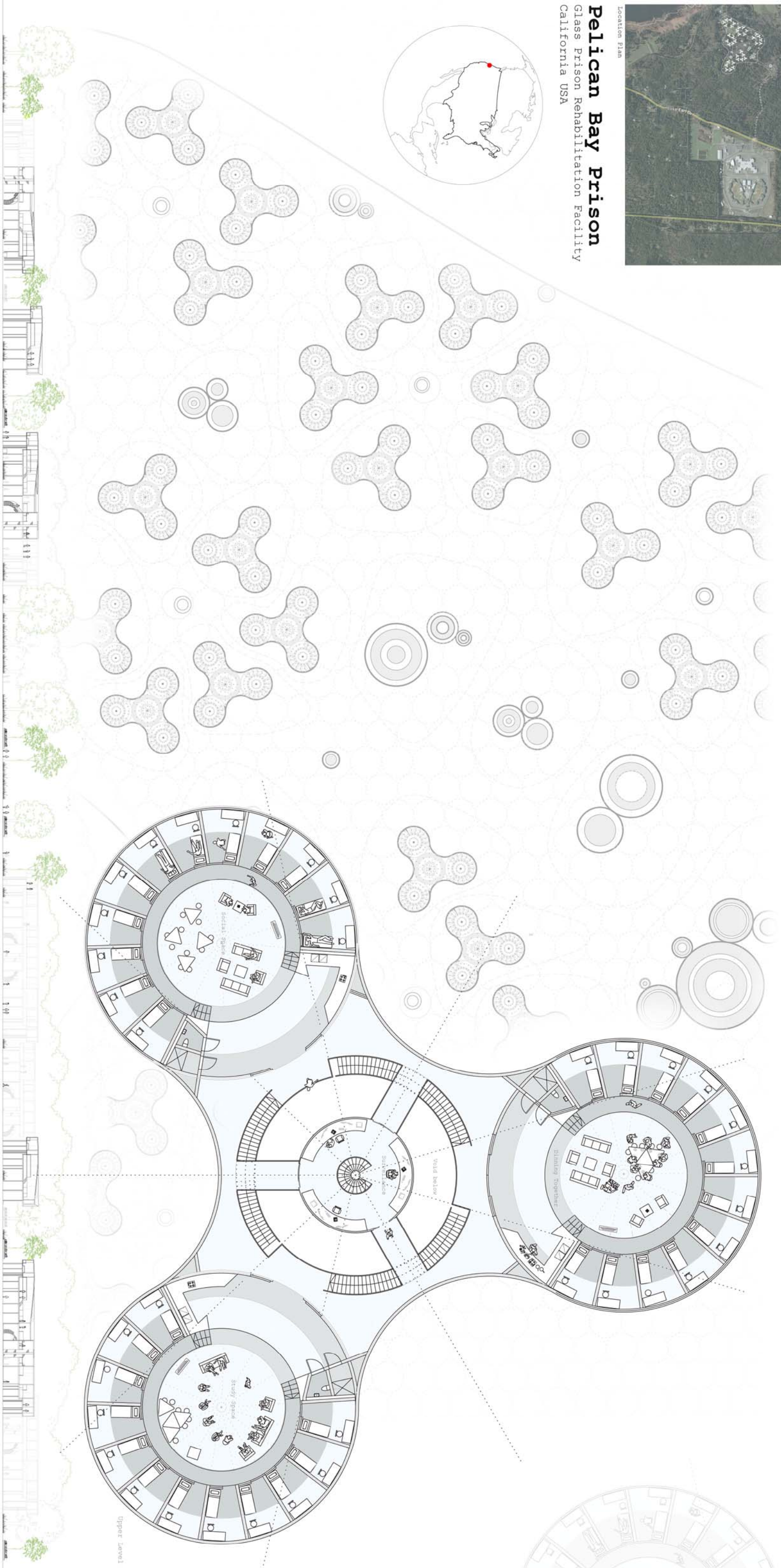
Location Plan

# Pelican Bay Prison

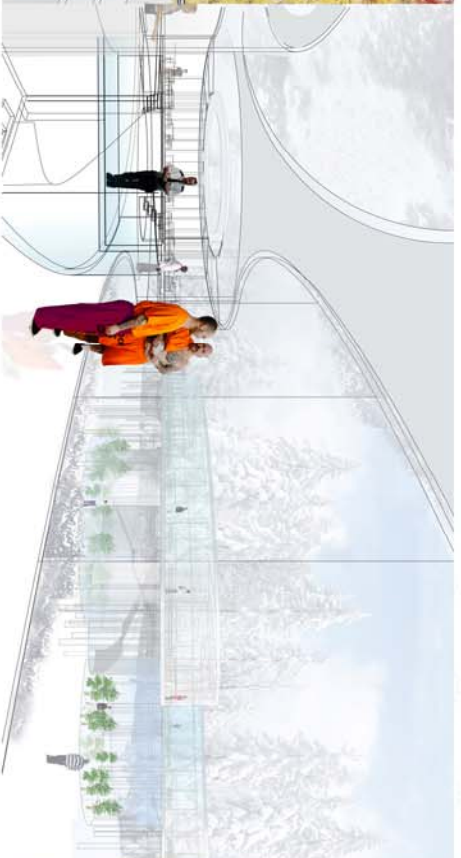
Glass Prison Rehabilitation Facility  
California USA



California's Pelican Bay maximum security prison is **more than 150% over** capacity with a high number of inmates re-offending after released. Located within a nearby clearing of forest, the proposal is to create a facility for **inmate's rehabilitation**. By using glass as the predominant material, the project hopes to offer an interactive environment and **symbolic exchanges between nature and each other**. By revealing and living within nature and with each other through glass, the proposal hopes to enhance the inmate's empathic, cooperative, social and contemplative skills. The harmony and balance of nature shall be reflected in the harmony and balance of the glass prison itself. Ultimately, the **turning of the seasons** hopes to precipitate the **rehabilitative and reformative process of the occupant's themselves**.



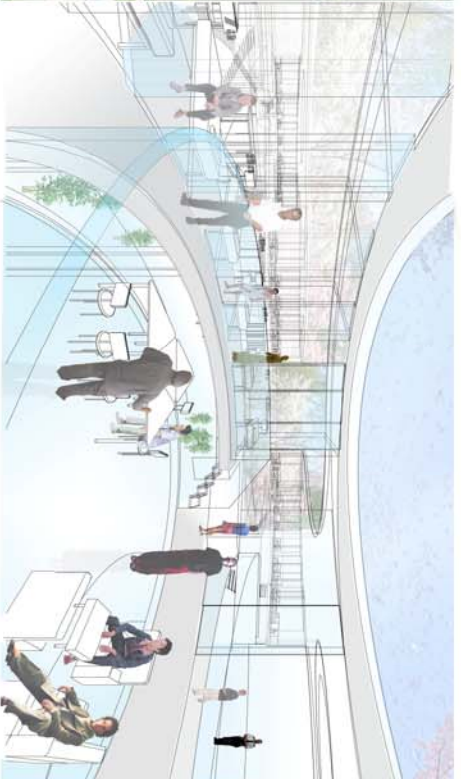
Autumn



Winter



Summer



Spring

Elevation

Upper Level