

SASCHA MIKLOWEIT

Unrealized project for a public transport or railway station

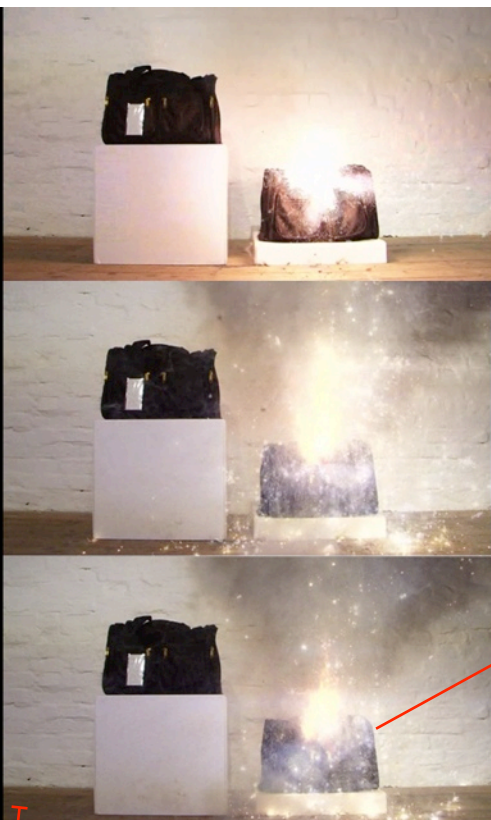
Title: INVESTIGATION2

INTRODUCTION

INVESTIGATION2 is the continuation of my field research project which started 2010 with INVESTIGATION1 (for detailed material regarding this project inclusive video please visit this webpage)

<http://www.mikloweit.net/a/investigation1/>

INVEST.2 is further utilizing the documenting material generated through INVEST.1. The ending point of INVEST.1 was the 'Art-Object Left Unattended (AOLU)', an artificial object, brought to life during a four weeks period of re-defining to bags in relation to each other as well as in relation to the social sphere and the institutional sphere of the gallery. The project – following the logic of counter-terrorism measures – ended with the detonation of the former 'bag', by then 'Art-Object Left Unattended (AOLU)'.



INVESTIGATION2

The documenting video of this detonation and the written documents of the alteration process are the starting point for INVEST.2.

The work comprises of three modules – two indoors and one outdoor – all part of the public sphere.

MODULE1 (indoor)

5 walls out of fireproof plasterboard are holding three clip frames each (each wall = 1week INVEST.1 = 3 documents = 3 clip frame). Each frame contains one document of INVEST.1, the fifth wall contains the two written documents of the explosion and the documentation video.

All information, frames and monitor are turned against the walls, backside out. The video is playing, sound running. Approximate distance of each wall towards the other 45cm.

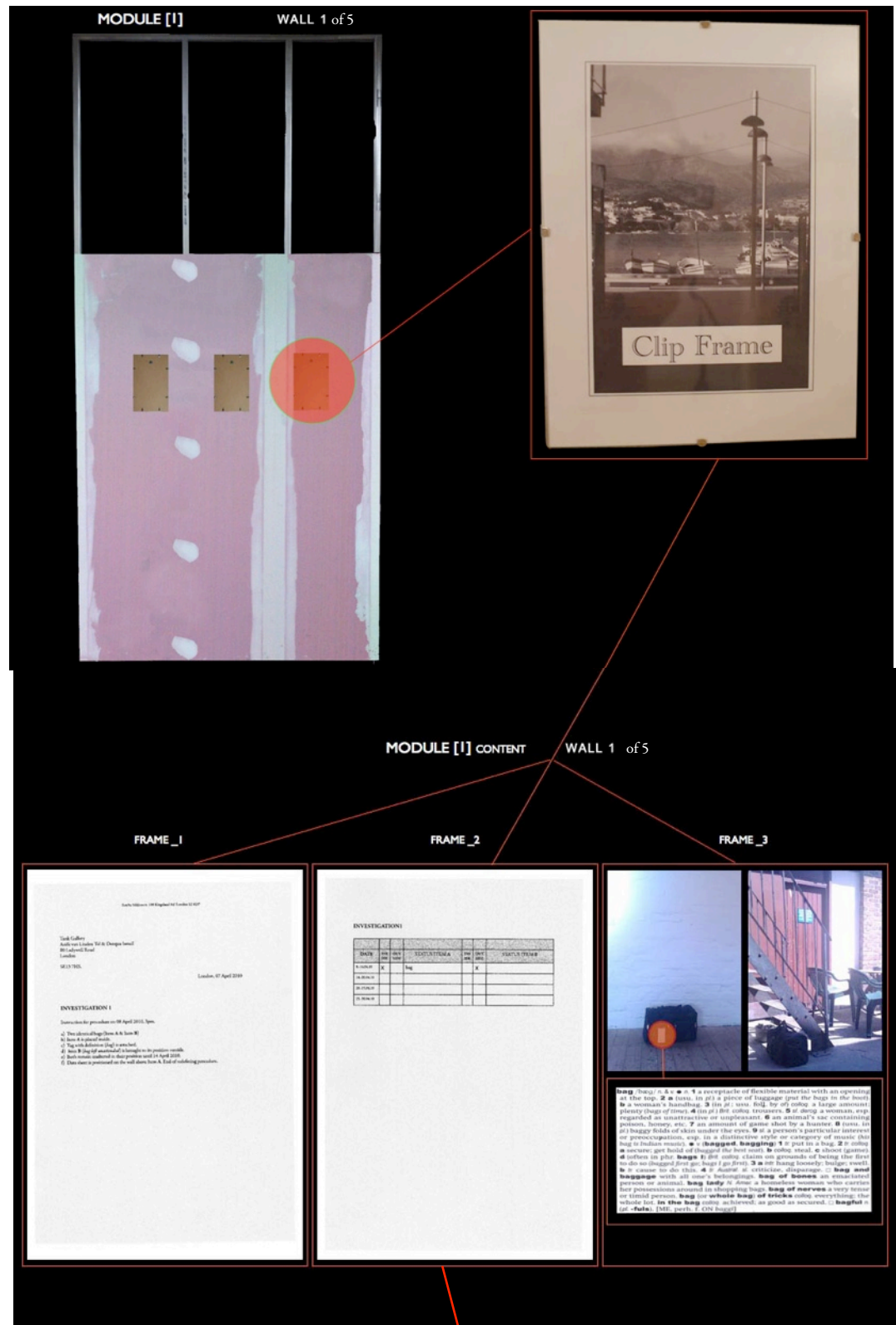


fig.1: MODULE1 example elements +
 Frame_1: Instruction sheet 1st week
 Frame_2: Alteration sheet 1st week
 Frame_3: Images positions 1st week and + tag

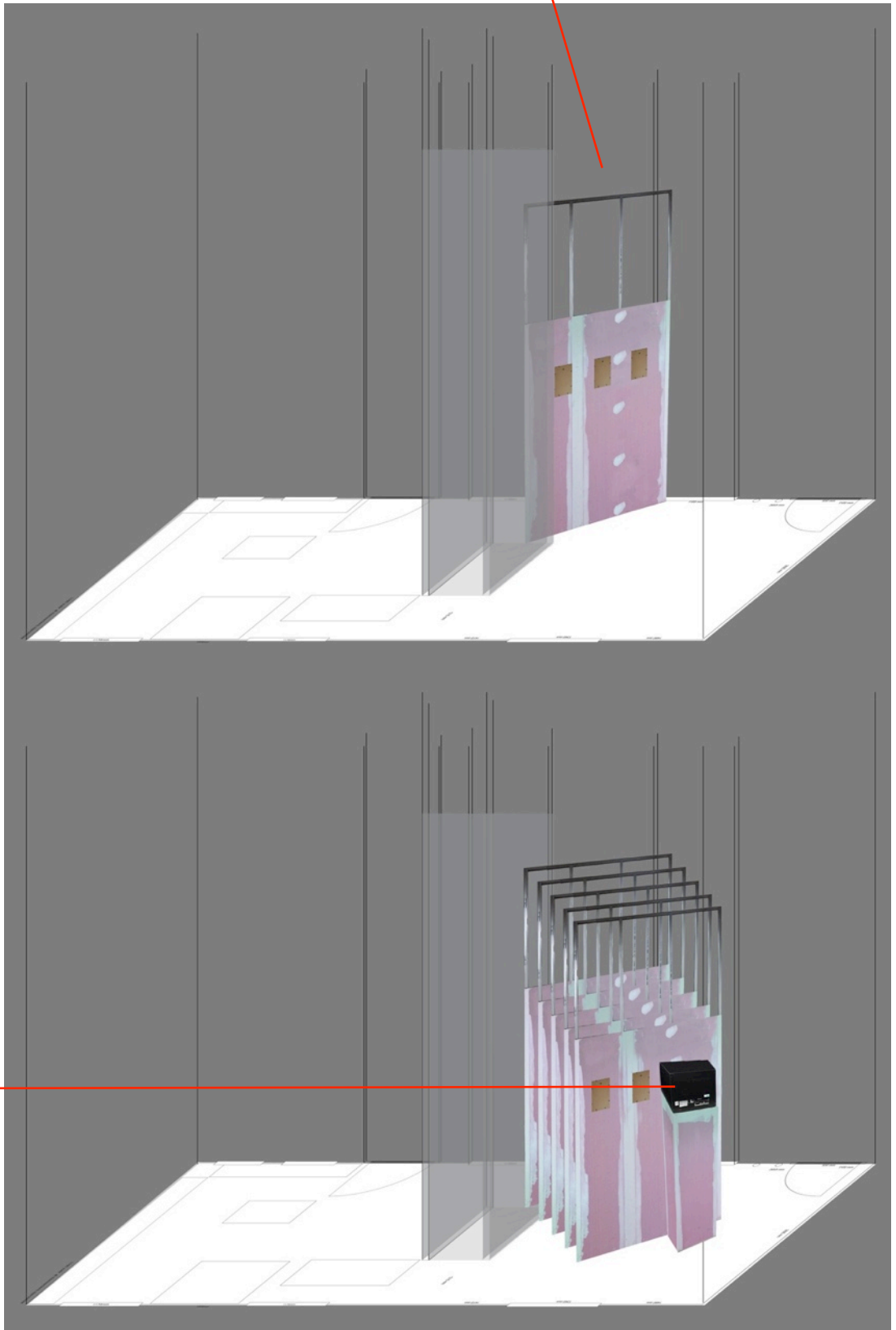
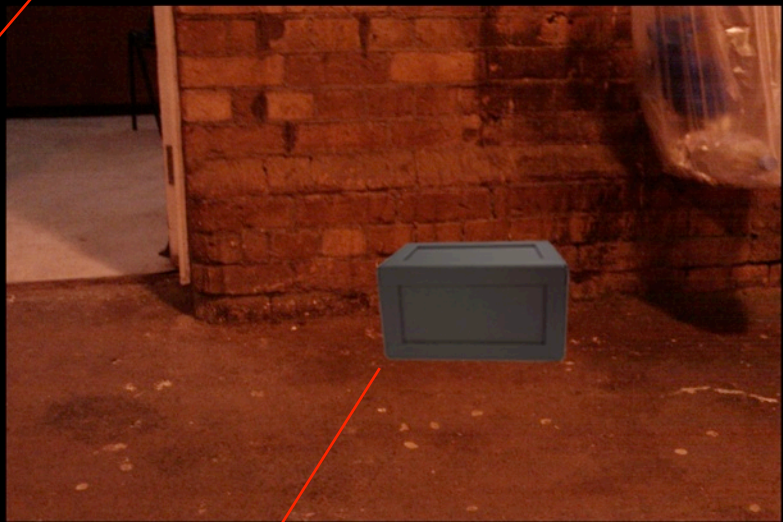
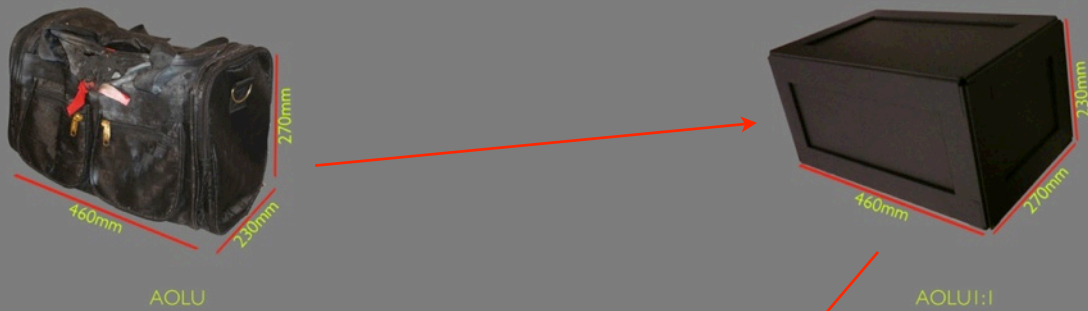


fig.2 MODULE1 indoor view

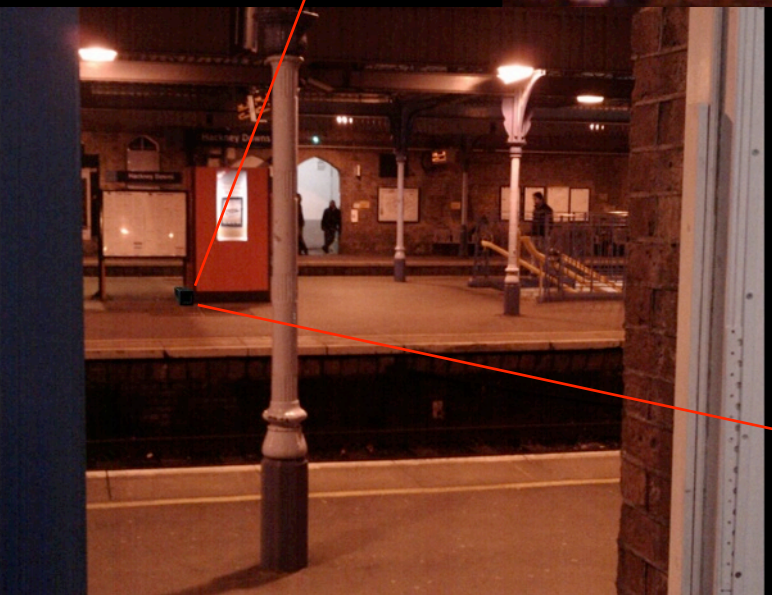
MODULE2 (outdoor)

On each platform one abstracted *AOLU (Art-Object Left Unattended)* will be positioned in a visible connection to the room containing module 1&2.



Entrance to example room containing MODULE1&3

Outside views
station environment



MODULE3 (indoor) (not visualized)

Will be a small library/reading-corner with table and chairs. The selection of books will contain publications from the field of 'Critical Studies on Terrorism'

http://www.bisa.ac.uk/index.php?option=com_content&view=article&id=93-cst&catid=37-working-groups&Itemid=68

and beyond, as well as a publication on INVEST.1

This collection of alternative knowledge production will be open to the public in general, but especially to the commuting public. Offering the possibility to rest, read, think and discuss. A collaboration regarding the selection of titles for this module with scholars from the field of CST would be of interest.