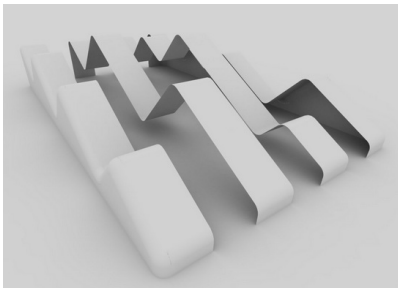
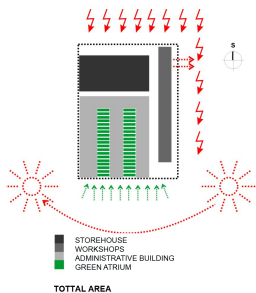


NEW BUSINESS COMPLEX, LJUBLJANA

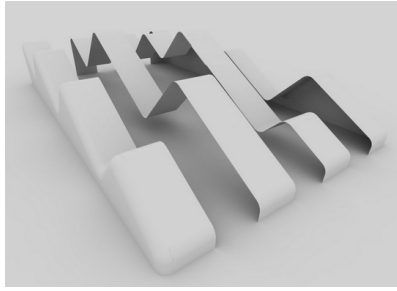


- 1. GENERAL DESCRIPTION OF SPATIAL AND ARCHITECTURAL DESIGN
- 2. DESCRIPTION OF THE TOTAL AREA
- 3. FUNCTIONAL SCHEME
- 4. OTHER ELEMENTS OF ARCHITECTURE
- 5. INSTALLATION SCHEME

- 1. GENERAL DESCRIPTION OF SPATIAL AND ARCHITECTURAL DESIGN
 - 1.1 ARCHITECTURAL FORM of the new business complex comes from analyzing natural conditions and from reinterpretation skyline from distance. At the same time it reflects the function of the building to some extents: distribution of electrical power.
Architecture meets the function, becomes a landmark of the area and a brand mark of the company.
The program is organized in blades, open space offices and offers an ideal use of indirect sunlight, perfect space flexibility and a perfect exploitation of sun power with photovoltaic on folded roof.
 - 1.2 GREEN ATRIUMS, embraced by the blades, form high-quality and highly controlled green area. This green area provides a continuous view of commercial strips, but also by approximating the complex, they become visible to visitors and passers-by.
Architecture becomes interesting - it becomes a subject of interest.



- 1.3 FASADE DESIGN TYPOLOGY varies depending on the position of the blade in the business complex. The external cocoon is strict and technological, meanwhile are the internal facades dematerialized, soft and light. Sunlight is strictly controlled.
- 1.4 ALLOCATION OF SPACE
The concept is "open space", so the communication is minimal.



1. GENERAL DESCRIPTION OF SPATIAL AND ARCHITECTURAL DESIGN
2. DESCRIPTION OF THE TOTAL AREA
3. FUNCTIONAL SCHEME
4. OTHER ELEMENTS OF ARCHITECTURE
5. INSTALLATION SCHEME

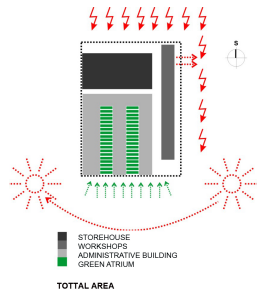
1. GENERAL DESCRIPTION OF SPATIAL AND ARCHITECTURAL DESIGN

- 1.1 **ARCHITECTURAL FORM** of the new business complex comes from analyzing natural conditions and from reinterpretation skyline from distance. At the same time it reflects the function of the building to some extents: distribution of electrical power.

Architecture meets the function, becomes a landmark of the area and a brand mark of the company.

The program is organized in blades, open space offices and offers an ideal use of indirect sunlight, perfect space flexibility and a perfect exploitation of sun power with photovoltaic on folded roof.

- 1.2 **GREEN ATRIUMS**, embraced by the blades, form high-quality and highly controlled green area. This green area provides a continuous view of commercial strips, but also by approximating the complex, they become visible to visitors and passers-by. Architecture becomes interesting - it becomes a subject of interest.



- 1.3 **FASADE DESIGN TYPOLOGY** varies depending on the position of the blade in the business complex. The external cocoon is strict and technological, meanwhile the internal facades dematerialized, soft and light. Sunlight is strictly controlled.

1.4 ALLOCATION OF SPACE

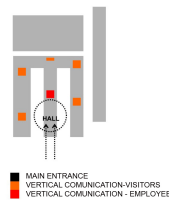
The concept is "open space", so the communication is minimal.

The thin blades concept permits the offices to get natural light from both sides: east and west and have the possibility of a perfect control of natural light during the day. It's supposed to achieve west light in the morning and east light in the afternoon and always keep view on illuminated atrium.

Each blade has a unique volume and a folded roof that creates natural hierarchy of spaces. Smaller and higher spaces are meant for the leading personnel that gets visual control of the whole volume. Working environment is stimulating and kind.

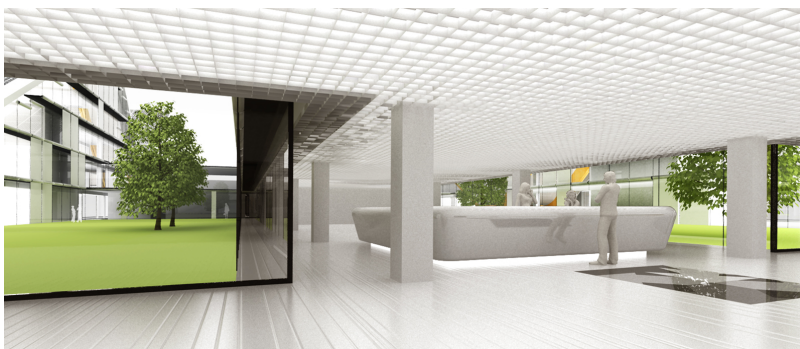
2. DESCRIPTION OF THE TOTAL AREA

- 2.1 Location is defined by the area of transformer station RTP Bericevo at the main road Črnuče- Litija. RTP Bericevo confines the location from east and north, on the south there is the street and on the west there are fields. Access for cars and trucks is from the main road, using the existing connection. Trucks are turned before blade D to the Nord, where the workshop halls and storehouses find place, cars are directed to the basement parking area, using the existing juncture and pedestrians get the main entrance using the main central hall on the ground floor.



COMMUNICATION SCHEME

Main entrance is central and offers a complete open view on the internal atrium and access to different zones of the business complex



3. DESCRIPTION OF OTHER ELEMENTS OF ARCHITECTURE

3.1 Integration into the landscape / CONTEXT

Such tech building is clearly difficult to integrate into the landscape in the classic sense. Search is necessary in the wider

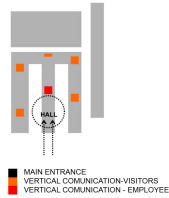
1.3 **FASADE DESIGN TYPOLOGY** varies depending on the position of the blade in the business complex. The external cocoon is strict and technological, meanwhile are the internal facades dematerialized, soft and light. Sunlight is strictly controlled.

1.4 **ALLOCATION OF SPACE**

The concept is "open space", so the communication is minimal.
The thin blades concept permits the offices to get natural light from both sides: east and west and have the possibility of a perfect control of natural light during the day. It's supposed to achieve west light in the morning and east light in the afternoon and always keep view on illuminated atrium.
Each blade has a unique volume and a folded roof that creates natural hierarchy of spaces. Smaller and higher spaces are meant for the leading personnel that gets visual control of the whole volume. Working environment is stimulating and kind.

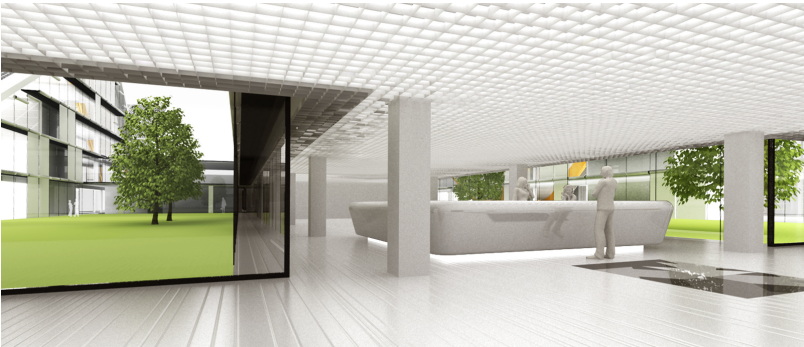
2. **DESCRIPTION OF THE TOTAL AREA**

2.1 Location is defined by the area of transformer station RTP Bericevo at the main road Črnuče - Litija. RTP Beričevo confines the location from east and north, on the south there is the street and on the west there are fields.
Access for cars and trucks is from the main road, using the existing connection. Trucks are turned before blade D to the Nord, where the workshop halls and storehouses find place, cars are directed to the basement parking area, using the existing juncture and pedestrians get the main entrance using the main central hall on the ground floor.



COMMUNICATION SCHEME

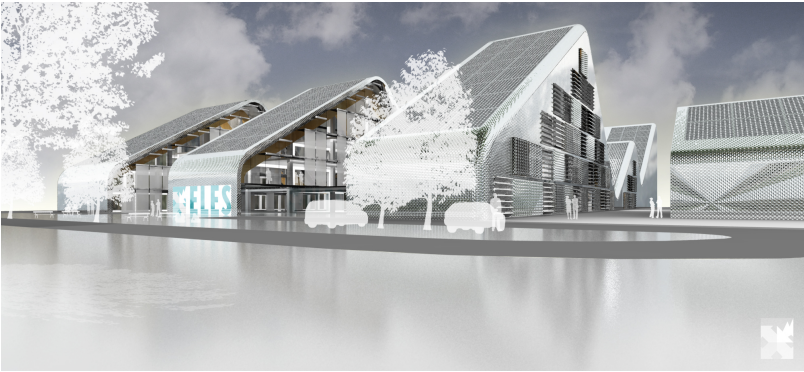
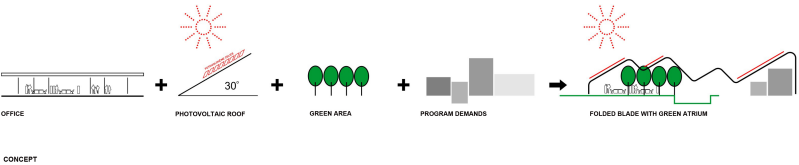
Main entrance is central and offers a complete open view on the internal atrium and access to different zones of the business complex



3. **DESCRIPTION OF OTHER ELEMENTS OF ARCHITECTURE**

3.1 **Integration into the landscape / CONTEXT**

Such tech building is clearly difficult to integrate into the landscape in the classic sense. Search is necessary in the wider environment and the use of new materials. Form reflects Slovene landscape; internal atriums reflect traditional private yards of Slovene houses. We refused using classical materials for such building, because the architecture would be out of scale and not integrated. Therefore we choose bumped reflecting sheet metal that reflects the sky and the landscape, for the external facade of the complex. Integration becomes dematerialization of the volume and mimetization.



3.2 **SUSTAINABILITY**

The entire business park is designed on the principle of concrete structure, which allows activation of the concrete core, thereby creating maximum favourable microclimate for the employees.

3.3. **CORRUGATED ROOF - VENTILATION**

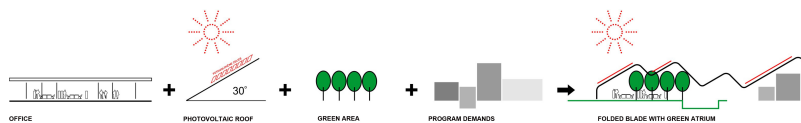
Corrugated roof, which operates on the principle of the chimney, allows natural night ventilation in summer with the capture of air at the floor of the building and exhaust through the roof lupus the highest points in the roof and winter displacement ventilation with heat recovery air.



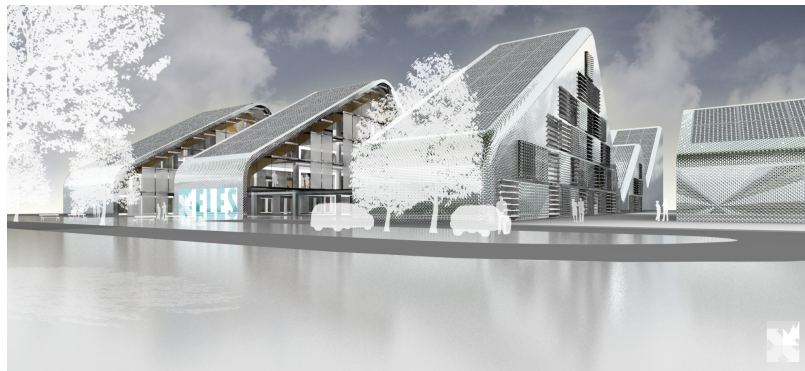
3. DESCRIPTION OF OTHER ELEMENTS OF ARCHITECTURE

3.1 Integration into the landscape / CONTEXT

Such tech building is clearly difficult to integrate into the landscape in the classic sense. Search is necessary in the wider environment and the use of new materials. Form reflects Slovene landscape; internal atriums reflect traditional private yards of Slovene houses. We refused using classical materials for such building, because the architecture would be out of scale and not integrated. Therefore we choose bumped reflecting sheet metal that reflects the sky and the landscape, for the external facade of the complex. Integration becomes dematerialization of the volume and mimetization.



CONCEPT

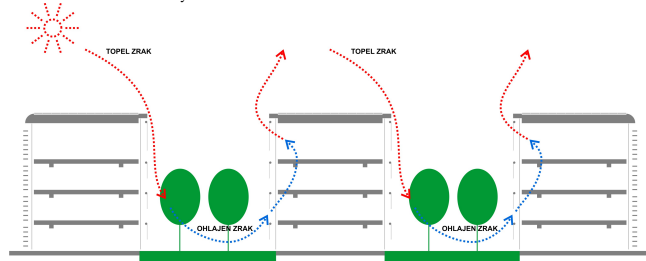


3.2 SUSTAINABILITY

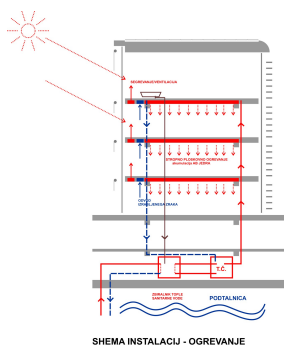
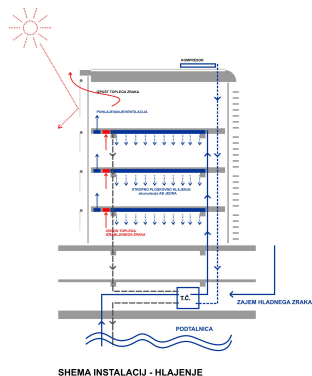
The entire business park is designed on the principle of concrete structure, which allows activation of the concrete core, thereby creating maximum favourable microclimate for the employees.

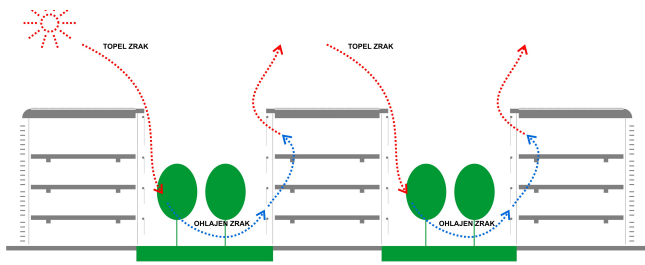
3.3 CORRUGATED ROOF - VENTILATION

Corrugated roof, which operates on the principle of the chimney, allows natural night ventilation in summer with the capture of air at the floor of the building and exhaust through the roof lupus the highest points in the roof and winter displacement ventilation with heat recovery air.

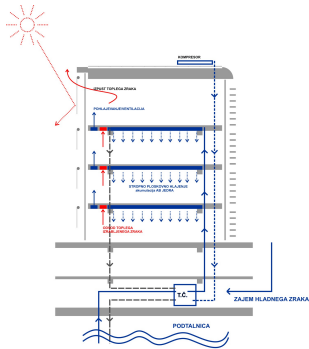


MIKROKLIMA - KROŽENJE ZRAKA IN NOČNO PREZRAČEVANJE POLETI

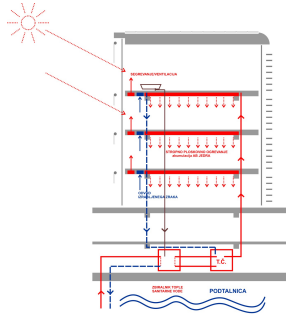




MIKROKLIMA - KROŽENJE ZRAKA IN NOČNO PREZRAČEVANJE POLETI



SHEMA INSTALACIJ - HLAJENJE



SHEMA INSTALACIJ - OGREVANJE